

DUNDEE- MEMORIAL PARK ASSOCIATION



DMPA Meeting

March 10th

Dundee Presbyterian Church
53rd & Underwood Ave

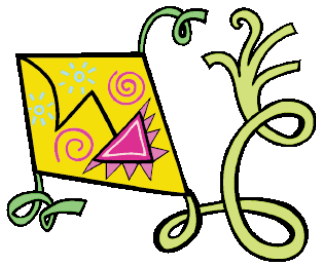
7:00 PM - Social

7:30 Business Meeting

8:00 Program

**Sandra Redding, Joslyn Art
Museum**

**Topic: "Joslyn Art Museum's
new sculpture garden"**



Join DMPA Today
Membership Form
Inside Back Page

Dundee-Memorial Park Association Newsletter

"Dedicated to Preserving the Community"

www.dundee-memorialpark.org

Published by Shurson Publishing, P.O. Box 31485, Omaha, NE 68131

Vol. 18, No 3, March 2008

President's Message

Oh, the winter of 2008 is going to be indelibly imprinted in my memory. It seems to have been going on for many, many months! I was hoping that the meteorologists who predicted a mild January and February might be right, but alas, no! I know that we are a hardy people who live on the plains and we can endure frigid cold and blowing snow, but enough is enough! Let there be warmth and greening of the grass and trees. It is time for spring.

This upcoming weekend, March 7 and 8, Millie Miller and her band of volunteers are pretending that it is spring. They are meeting at Indian Creek Nursery greenhouse to plant the 475 flower baskets which have become synonymous with the Dundee-Memorial Park neighborhood. If you have a few extra hours between 10:00 and 3:00 on Friday or Saturday, Millie could use the extra helping hands. Give her a call at 558-6023.

Since I am trying to think "spring," I will tell you that the DMPA will once again have its annual Dumpster Day, co-chaired by Heike and Adam Langdon, and the Association Garage Sale headed up by Raquel Ahlvers, Ellen Zinn and Gene Ray. We are waiting to hear from the City to assign us a date for our Dumpster Day and then we can designate a date for the garage sale. You can start collecting items to be tossed, re-cycled or sold and we will let you know the dates as soon as we can.

Dave Schinzel, DMPA's representative to the Midtown Neighborhood Alliance, informed us at the February meeting that the new owner of the 9 former Kum and Go stores has postponed his attempt at getting full liquor licenses from the state liquor license commission until March 20.

There will be a concerted effort to thwart this attempt by the MNA as they feel there are enough liquor stores in our neighborhoods. Dave is still collecting signatures opposing these liquor licenses. We will keep you posted as this saga goes forward.

Our meeting this month, March 10, features Sandra Redding from the Joslyn Art Museum. She will be making a presentation on the new sculpture garden that the museum is now developing. It is just another piece of the downtown improvement puzzle. Come and hear what wonderful things the museum is doing for our enjoyment.

Think warm thoughts. See you at the meeting.

Marty Myers

Dundee -Memorial Park Association Board of Directors

Officers

Marty Myers, President
556-2513

Bob Welk, President Elect
Secretary

Jeff Royal, Treasurer
556-7999

Committees

Newsletter Publisher/Editor

Ellen Shurson, 551-6787
shurson@msn.com

Street Captain Coordinator

Peter Manhart, 397-0377

Problem Solving

B.J. Reed, 556-5509

Membership Data

Eli McNichols, 551-5246
elimci@netzero.net

Beautification

Millie Miller, 558-6023

NoDo (North of Dodge)

Lauren Kotulak-Bartels,
558-3150

Asyourgardengrows@ hotmail.com

SoDo (South of Dodge)

Business Liaison

Bill Stott, 551-3400

Library & Rec Center Committee

Donna Rock, 551-7107

Active Past Presidents

Gary Kerr, 556-4964

Jerry Ahlvers, 558-0641

Dan Rock, 558-4913

Don Browsers, 556-6638

Carla Hanson, 556-8498

Bill Kelly, 558-9811

B.J. Reed, 556-5509

Chris Kilroy, 558-2111

Jack Kubat, 556-7436

Send membership renewals and inquiries to address on enclosed membership form, on the inside back page.

Advertisers Index

Brownell Talbot School Musical
CBSHOME Real Estate- Jerry & Hedy Ahlvers
CBSHOME Real Estate - Mary Dunbar
Children's Physicians Dundee
Cramer Kreski Designs
Creighton Family Healthcare - Dundee
Dundee Bank
Dundee Presbyterian Church
eCreamery
Great Harvest Bread Company
Kohl's Pharmacy & Homecare
Luther Memorial Church
MG Contracting and Design
Montessori Learning Center of Dundee
Oldenhuis Contracting, Inc.
The Orthodontic Group, P.C.
The UPS Store

DMPA MEETINGS CALENDAR

March 10th

Sandra Redding, Joslyn
Art Museum

Topic: "Joslyn Art
Museum's new
sculpture garden"

April 14

Jay Noddle, Aksarben
Village Developer.

May 12

Scott Farrington, Indian
Creek Nursery.

Please thank these advertisers
their support makes this newsletter possible.

DMPA Business Members

Aromahatherapy, Armstrong Cleaners & Laundry, The Architectural Offices, As Your Garden Grows, Balanced Living, Beyond Repairs, Bruns Graphics: Art to Go!, CBSHOME Real Estate Agents- Jerry & Hedy Ahlvers, Mary Dunbar, Deeb Realty- Bobbi Schoettle, Century 21 - Jerry Hassett, Cramer Kreski Designs, Creighton Family Healthcare, DMG Enterprises, Dundee Dell, Dundee Gallery, Dundee Presbyterian Church, Dynamic Fitness, G.K. Management Co, LLC, eCreamery, Grandpa's C Mart, Goldberg's II, Inc., Houchen Bindery, Edward Jones & Co- Chris Kilroy, Elmwood Salon and Day Spa, J. Development Co., J & S Properties, KDE Woodworking, Kohl's Pharmacy and Home Care, Michael Levy, Attorney, David Mann Property Management, Marks, McGuire & Associates, Meeting & Event Design, Montessori Learning Center of Dundee, M.O.D. Inc., Michael D. McClellan, Attorney, Ninos - Spanish Language School, Old Dundee Bar & Grill, Oldenhuis Contracting, Inc., Proactive Computer Services, Quiznos, RSK Management Co., R G Paint & Decorating, Timothy Sheehan, D.D.S., M.S., State Farm Insurance - Matt Dougherty, Subway Sandwich Shop, Threlkeld Art Studio, Torpy Tree Care, The UPS Store, Werner's Painting & Decorating, Terry Wilwerding, DDS, Kirk Wynn Oriental Carpets, Wohlner's Pharmacy
Revised list, members current 2/08 To join as a business member, send dues with the form on the inside back page. Please send to Elizabeth McNichols, address below.

DMPA Online www.dundee-memorialpark.org

The Dundee-Memorial Park Association Newsletter is published monthly by Shurson Publishing. Direct all advertising inquiries to 551-6787. Send all articles for submission and press releases to Shurson Publishing, P.O. Box 31485, Omaha, NE 68131, e-mail to Shurson@msn.com to arrive by the 15th of the month preceding publication. Content may be edited for clarity and space considerations. No warranties of the products or services printed herein are expressed or implied by either the DMPA or Shurson Publishing.

Memberships please send the form on the inside back cover to:
Elizabeth McNichols, 5017 1/2 Cass St., Omaha, NE 68132.
Questions call 551-5246 or email: elimci@netzero.net



free checking
free ATMs
free smiles

deedlicious

50th and Underwood dundeebanking.com



dundee bank

A BRANCH OF SECURITY STATE BANK | MEMBER FDIC

Voices From the Village

Village Voices is a taped interview by Ward Peters with neighbors within the DMPA community transcribed by Bonnie Price. Architect George Haecker and Community Volunteer Judy Haecker are this month's voices from the village

We never owned a home until we came to Omaha. We're both from Lincoln and when we moved back to Nebraska in 1968, Omaha had broader opportunities and was close enough to family but not right next door. It was a good compromise.

When we drove into town we knew this neighborhood was for us because of the character it had then and has now...sidewalks, trees, parks and all the amenities. A social comment that might be interesting is the realtor we had at the time said "don't go in this part of town because it is not going to get any better and in fact, it's going to get worse."

After we moved to this street, (N. 57th Ave.), we found we were kind of the blockbusters, age wise. Our house was built in '29, and many of the people living up and down the block were elderly. We were one of the first of the next generation with children and dogs. But within 15 years we would have to shoo the kids out of the way to walk down the sidewalk..

When you pick a neighborhood and other people pick the same neighborhood with similar values, it's a comfortable environment. Some people that live way out West, do not necessarily have the same attitudes about a town or a city that we do, but we picked this area for a reason, as did others, which makes it cohesive.

There is a buzz word in urban design called "new urbanism." When you boil down the essential elements of new urbanism- which is very popular; sustainable, with social rationale and connections with it-they already exist in this neighborhood. New urbanism is nothing more than old urbanism which is a street, a planting area, a sidewalk, a front yard, a front porch, and windows on the street. Everything's tightly scaled. We are, only ten feet from the house next door. Not mega yards, not three car garages, just a nice scale, compact environment that's comfortably put together with those connecting elements that make a place safe and livable...so we are living in the latest thing! New urbanism!

We're concerned about urban sprawl, suburban sprawl, infrastructure spread and the waste that costs societies and cities with that kind of horizontal planning. Omaha in the last 30 years, geographically, grew a hundred percent but demographically grew slightly over ten percent and so the infrastructure it takes with police, fire, sewer, water and streets is very wasteful and damaging to the natural environment. But the core values of urban planning, city planning are right in place here. Of course, somebody in 1910, living in Bemis Park could have said

the same, " boy, if they were to develop that Memorial Park area, that's going to be terrible sprawl and wasteful."

We walk to get haircuts, to doctors, to church and to dinner. One of the things that really anchor this neighborhood is the quality of the churches and schools...Dundee, Harrison, St. Margaret Mary's and Brownell Talbot. The neighborhood's cohesiveness is natural in this pattern of ingredients. It's a proven formula that works well.

This neighborhood lends itself to knowing your neighbors. We watch out for each other. In fact, just last night the neighbors called and said we forgot and left our garage open. It's a wonderful feeling of extended families and if you don't have a lot of family here we have just adopted each other.

Once when Sarah Keene, who is 35 years old now, was standing on the sidewalk on the other side of the street, I asked her what she was doing. She said she was waiting for somebody to "cross her." We had made this rule that our children could not cross the street unless an adult accompanied them. I asked her how long she had been standing there and she said it had been a while. That's part of the village story that we experience here.

I'm accused to this day of being an intrusive observer of teenage activity. I did have a hand in kaboshing a few teenage parties and getting the parents involved. There were a few occasions when parents were out of town, teenage parties would get out of hand and a little loud and I blew the whistle when I thought I should.

So when it comes to a condo downtown, we're not in the market. In the summertime our living room becomes our deck. We grill, eat and read the paper out there. We love being outside. The neighborhood is beautiful in all seasons. I go out and photograph up and down the streets sometimes. The trees, houses and topography all combine to create this environment.

**Please Tell Our advertisers
you saw their ad in this Newsletter.**

We're Right Here in Your Neighborhood!



**Children's
Physicians**

Dundee

119 N. 51st St., 449-5959

Board-Certified Pediatricians

Jillyn A. Kratochvil, MD
Michael J. Moore, MD
Patrick J. Specht, MD
Erin Willis Loucks, MD

Call now to schedule your
free "getting to know you" visit.

Monday-Friday: 8:30 a.m. - 5 p.m.
Saturday: 8:30 a.m. - noon



Midtown Neighborhood Alliance Update

The Midtown Neighborhood Alliance met for the February meeting on the 20th. The Planning Department gave a presentation on the Area of Civic Importance overlay for all of the neighborhoods of Midtown to consider similar to the presentation that was given at the January Dundee-Memorial Park meeting.

The MNA board approved a motion in support of Councilman Vokal's proposed ordinance to increase the penalties for those convicted of graffiti crimes. The neighborhoods to our east have seen a dramatic increase in graffiti in the past few weeks and Dundee-Memorial Park is not immune to this crime. The Midtown Neighborhood Alliance is considering applying for grants to provide graffiti cleaning materials to neighborhoods.

The liquor licenses for the former Kum & Go stores (including 52nd & Leavenworth) will be heard by the Liquor Control Commission on March 18th. There is still time to have your opposition to this license known to the Commission. If you are interested in signing a petition in opposition, please let me know. The Ford Birthsite Neighborhood, which also has one of these stores, reported that a known drug dealer had been working at the Park Ave. store. When they informed the owners about this, they moved the employee to another store after promising to fire him. If you see anything happening at the 52nd & Leavenworth store, please call 911.

The Midtown Neighborhood Alliance Annual Meeting will be held on Wednesday, March 19th at the Field Club of Omaha, 36th & Woolworth Ave. The meeting will begin at 6:30 pm and everyone living in the Midtown area is invited to attend.

Dave Schinzel
MNA Representative
drschinzel@hotmail.com

The Sweet Spot

Fresh Baked
Cupcakes,
Cookies &
Brownies !

eCreamery ice cream, gelato and coffee bar is now open. Stop in, and enjoy a scoop. Because with fabulous flavors and mouthwatering mix-ins, life will never be vanilla again.

Open 7 days a week
50th & Underwood • 402-934-3888
eCreamery.com

TO ADVERTISE
551-6787

Are You At Risk for Kidney Disease?

The Nebraska Kidney Association reminds everyone that kidney disease strikes one in nine Americans and some are at higher risk than others.

- Do you have diabetes?
- Do you have high blood pressure?
- Did your mother, father, sister, or brother ever have kidney disease or failure?

If you answered "yes" to any of these questions, you are at risk for kidney disease. Now is the time to talk to your doctor or health care professional about getting tested. It could save your life.

Early kidney disease is a silent problem, like high blood pressure. Kidney disease can become kidney failure with little or no warning, and is usually discovered right before the kidneys fail.

If you have diabetes, high blood pressure, or a family member with kidney failure, a doctor or health care professional should test your blood and urine for early signs of kidney disease. You can take steps to keep your kidneys working if the tests show kidney disease.

The mission of the Nebraska Kidney Association is to improve the lives of all Nebraskans through advocacy, education, early disease detection and patient services.

Learn more about kidney disease, testing and treatment by visiting www.kidneyne.org or www.nkdep.nih.gov.

Help Save Lives.

Donate your car, truck, boat or RV.

Call 888-642-8543 today!

**Be a good neighbor...
Please Clean up
after your dog!!!**

Great Harvest Bread Co.

Hop in to Great Harvest and order a bread bunny (or two!) for your Easter table.



These bunnies are hand-crafted, one of a kind, adorable as well as edible.

Available in:

- White • Honey Whole Wheat • Pastel
- Cinnamon Chip (White) • Cinnamon Chip (Wheat)

Other Great Harvest Easter Specials:

Pastel Dinner Rolls-- Lemon Roll-ups
Houska Bread -- Hot Cross Buns

Call ahead
to place
your orders!



**Happy
Easter!**

Rockbrook

10916 Elm St.
(402) 390-9988

Dundee

4910 Underwood Ave
(402) 551-8800

West Dodge

15623 West Dodge Rd
(402) 932-0288

Member
American Association of
Orthodontists

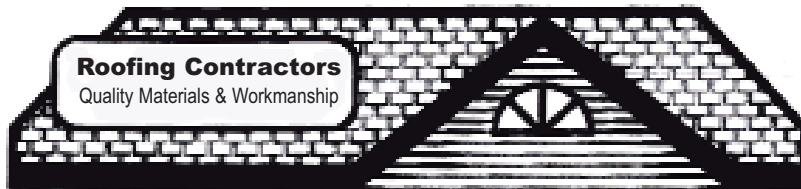


THE ORTHODONTIC GROUP P.C.

TIMOTHY J. SHEEHAN, D.D.S., M.S.
PRACTICE LIMITED TO ORTHODONTICS

119 NORTH 51ST STREET, SUITE 400 OMAHA, NEBRASKA 68132 (402) 558-0035
www.theorthodonticgroup.com

Roofing Contractors
Quality Materials & Workmanship



La Hood Construction Established • 1986



Quality Workmanship
Guaranteed

All Types of Roofing
Applications

Roof & Chimney Repairs



Sadly some things will never come back--like drive-in movie theaters and a draw of beer for a quarter. But one thing that is making a comeback is floor tile or at least it is being rediscovered because, in truth, floor tile never really went away.

The first rubber floor tiles were introduced in 1894, but rubber stained easily and deteriorated fairly quickly due to ozone exposure. Rubber tiles were replaced with asphalt tiles in the 1920s. Asphalt tiles were more durable, but colors and patterns were limited. Finally vinyl tiles entered the scene in 1933. But due to vinyl shortages during World War II, vinyl tiles were not widely used until the late 40s.

Today, vinyl tiles are available in a rainbow of colors and patterns so creating a floor tile design that matches a vintage look for your old house is pretty easy. Vinyl floor tile is a good flooring option for mudrooms, laundry rooms, basements and bathrooms. Installing a vinyl tile floor isn't too complicated and so it is doable for most homeowners.

Vinyl floor tiles basically come in two "flavors"--the kind you glue down with adhesive mastic and the "peel and stick" kind. "Peel and stick" is a less troublesome option because you won't have deal with adhesive oozing all over the place. "Peel and stick" tiles cost between 60 cents and two dollars per 12 by 12 inch tile. When calculating the number of tile you'll need, allow about fifteen percent for waste.

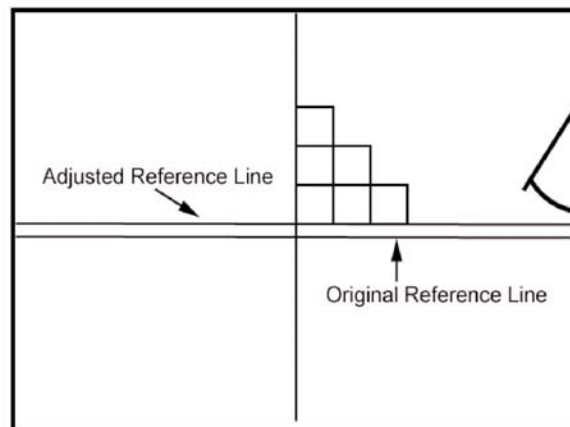
Start your project by removing the shoe molding at the bottom of the baseboard.

Professional-looking results start with a solid foundation, in this case a smooth, seam free underlayment. If you're working with a concrete floor, use a floor leveling compound to fill in any low spots and chip off or grind down any high spots.. For over a wood floor, nail or staple down sheets of 1/4" plywood staggering the seams between sheets. Use about 16 nails or staples per square foot spaced more or less evenly. (Renting a portable compressor and a pneumatic staple gun will make the job go faster.) Fill the seams between the sheets with floor leveling compound, let it dry and then sand it smooth.

You lay vinyl tiles starting in the center of the room and working outward. So start by dividing the room into quadrants. Measure and mark half the width of the room and then snap a chalk line from wall to wall. Then dry fit (that is, don't peel the backing off the tiles just yet) across half the width. If, when you get near a wall with full tiles, you are left with a narrow sliver of space left; shift your chalk line a few inches in one direc-

tion or the other so you end up with wider cut pieces at the wall. Then snap a chalk line centered on the other walls and perpendicular to your first line and again dry fit a row of tiles in one quadrant and adjust your chalk line if you need to.

Now start peeling and sticking one quadrant at a time. Using a stair step layout will help you keep the tiles square and tight. When you have laid all the full tiles you can in a quadrant go to the next quadrant. Since you'll be on your knees for quite a while, buy some knee pads. (You'll thank me for this in the morning.)



Once all the quadrants have been filled with full tiles, you can cut and place cut pieces along the edges. You can cut vinyl tiles with a utility knife but it's faster and easier to rent a vinyl tile cutter which is like a beefier version of a paper cutter. The vinyl tile cutter will work for straight cuts. If you need to notch any tiles use your utility knife for that. A tile cuts easier if you warm it up with a heat gun, but be sure to wear gloves so you don't scorch your fingers. After you've laid the floor roll over it with a J-roller or a rolling pin to make sure all the tiles are firmly pressed down. Then reinstall the shoe molding.

Now stand back and admire your new floor. But don't wash the floor for at least five days to give the adhesive a chance to fully set up.

Connections

If you have a question, or a subject you'd like addressed in a future column write to me at:

The Old House Mechanic
5207 Cuming Street
Omaha, NE 68127

Or call: 556-6638

e-mail: dbrowsers@cox.net

For an online archive of previous articles go to:
<http://www.dundee-memorialpark.org/>

CARING FOR MIDTOWN | CARING FOR YOU

The highly skilled team of doctors and healthcare professionals at **Creighton Family Healthcare – Dundee** are dedicated to caring for your healthcare needs.

From treatment of illness and minor injuries to regular check-ups and preventive care, our board certified internal medicine physicians provide expert care for all adults age 16 or older. Best of all, we're in your neighborhood and available at times that will work into your busy schedule. Appointments often can be scheduled the same or next day, and Monday evening appointments are available.

Our clinic is conveniently located at 119 North 51st Street.
To schedule an appointment, call between 8:30 a.m. and 5 p.m.

(402) 449-5960



Physicians:

Michael H. Davidian, M.D.

Devin J. Fox, M.D.

Carolyn Meekyung Manhart, M.D.

Most insurance plans accepted.

Creighton
FAMILY HEALTHCARE



Dundee • 119 North 51st Street • Omaha, Neb. 68132 • Office Hours: Mon. – Fri., 8:30 a.m. – 5 p.m. • Phone: (402) 449-5960

OK Late Bloomers...

We have received contributions from most of the blocks in the neighborhood.

We are planting this month and would really like to hear from you - yea or nea.



Please call Peter Manhart 350-3890 to let him know if your block is in this year.

We don't want your block to miss out on one of our beautiful iconic flowerbaskets. They are part of what makes Dundee so special!

Friends of the Omaha Public Library Book Sale

Friday, March 7th 10 AM to 8 PM

Saturday March 8th 10AM -5:30PM

Members of FOPL may attend the preview sale

Thursday, March 6th 6 PM to 8:30 PM

Swanson Branch Library, 90th & West Dodge

Memberships available at the sale, starting \$15.

Mini-Book Sales during regular library hours:

Check out the Book Cart at Sorensen, Florence, Willa

Cather and Washington branches

and "Honors Sales", lower level at Swanson Branch.



Cramer Kreski Designs

Residential Architecture For Fine Homes

Steve Cramer

Joseph F. Kreski, A.I.A.

Remodels ▪ Personalized Homes ▪ Additions

Kitchens ▪ Baths

333 ▪ 8334

Visit our website!

www.cramerkreskidesigns.com

A.V. Sorensen Library will have a Marvelous Makeover library style in late winter.

The remodeling will include a new computer lab, a teen room, a new elevator, a new service desk, new lighting, fresh paint and new carpeting. The library will be closed for several months and our refurbished library will open in late summer. Please visit any of the nearby locations during our renovation:

Willa Cather Branch 44th & Center 444-4851
 Benson Branch 60th & Binney 444-4846
 W. Dale Clark 215 South 15 Street 444-4800
 Swanson Branch 90th & Dodge 444-4852

The Sorensen Community center will remain open during the library renovations.

Here is a list of some of the alternate items that we would like to add if the money were available. If you would like to contribute toward these items, please contact Rivkah Sass @ 444-4834.

1. Display cabinet \$2,000
2. Set of Classic Fannel Board Fairy Tales \$500
3. Animal Shaped Children's Chairs (11) = \$210 each
4. Clover Husky Activity Table (2) = \$299 each
5. Flat Panel Television for the Teen Room = \$2000
6. Elevator display sign = \$100
7. Media Shelving for DVD's /Music CD's (2)= \$1825 each
8. Guitar Hero III with guitar for Wii= \$89.95

Thank you for all your generosity toward the Sorensen Branch Library. We will miss you during our remodeling but look forward to a Grand Re-opening Party in late summer.

Kay Scarpello
 Sorensen Branch Manager

Sorensen Recreation Center 444-5596

Phone or stop by for more information about ongoing programs for all ages.



Specializing in

- > Additions
- > Custom Kitchens/Baths
- > Renovations & Restoration
- > Remodeling
- > Outdoor Living Environments

**For project consulting call
 677-WOOD (9663)**

**Mark A. Goodrich, owner
 "Your Design/Build Firm"**

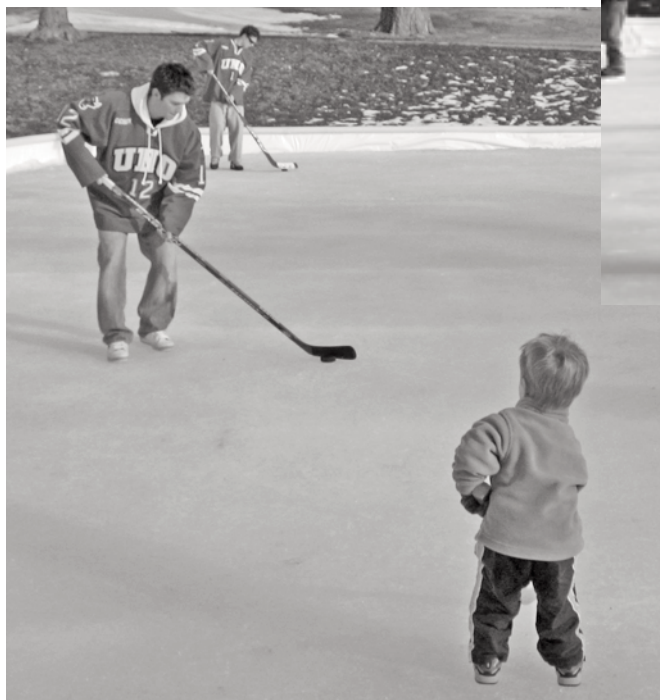
For a free Brochure, call 553-8393
 20+ Years Experience
 Neighborhood References Available



To join DMPA simply fill out the form inside back page.
 Good Neighbors Make Great Neighborhoods!

Skating with the Mav's at Dundee Ice Rink

Photos by B.J. Reed.



Luther Memorial Church
61st and Western
551-4488

Join us for Holy Week

March 16: Palm Sunday **Easter Egg Hunt** 2 to 4 p.m.

Holy Week Worship:

Maundy Thursday and Good Friday Noon & 6:30 p.m.

March 23: Easter Morning: 6:30, 8:45 & 11 a.m.

Easter Breakfast: 7:30 to 9 a.m.

TO ADVERTISE
CALL ELLEN SHURSON
551-6787

Do You Want to Contribute to Your Neighborhood?

Here's How: Join the DMPA Association Today

Please check your address label to see if your membership is current

-this will save the Association the time and expense of sending out reminders. Multi-year memberships are available. Give gift memberships or encourage your neighbors to join. Membership forms are located inside the back page.

Above all... **Be A Good Neighbor! *Good Neighbors Make Great Neighborhoods***

CBS Real Estate
HOME

MidAmerican SERVICES



MARY DUNBAR

Multi-Million Dollar Club

Residential Buyers & Sellers
Call 556-9388 or 498-8300

DUNDEE CLASSIFIED /WANT ADS

Denny's Handyman Service

Carpet Laying & Restretch
Painting & Home Repairs
397-4223 Area References

Reserve this spot

for next month
Call 551-6787

Advertising Rates: \$8 for three lines plus \$2 for each additional line. \$14 for a three line ad run for two consecutive months. 25 characters per line, count all spaces & punctuation. Submissions will be edited to fit contracted space. **Send check to Shurson Publishing, P.O. Box 31485, 68131. Call 551-6787.**

For All Your Healthcare Needs

We Care For You!

Quality, Customer Service,
Specialty Medical Products, at Great Prices

- Retail Pharmacy
- Compounded Prescriptions
- Rental Medical Equipment
- Oxygen & Nebulizers
- Wheelchairs & Walking Aids
- Diabetes & Ostomy Supplies
- Wellness Center
- Mobility & Rehab Equipment Center
- Wound Care
- Orthopedic Supports & Braces
- Respiratory Therapists, Occupational Therapists & Dietician On Staff

Kohl's

Pharmacy & Homecare

Seven locations to serve you. • www.kohls.com

114th & Dodge - 408-0012 • 84th & Hwy. 370 - 331-8632
29th & Leavenworth - 342-5886 • 3427 S. 84th - 393-1404
43rd & L - 733-2000 • 127th & Q - 895-3101 • 5000 Dodge - 553-8900

Dundee Presbyterian Church

Loving God, Sharing Jesus Christ

Underwood at Happy Hollow • 558-2330

9 & 11 am Worship
10 am Church School for all ages



We look forward to sharing Sunday with you!

PLEASE CHECK YOUR MAILING LABEL

Please renew **before** your membership lapses.
Multi-year memberships are available.

Dundee-Memorial Park Association Membership Form

Name (s) _____

Address: _____ Zipcode _____

Phone _____ E-mail: _____

Multiple year membership discounts : Family 2 year - \$20, Senior 2 year -\$10, Business 2 yr \$30

Send form (Photo copy acceptable) and checks to

Eli McNichols 5017 1/2 Cass St, Omaha, NE 68132

(Please DO NOT send to p.o. box.)

_____ I would like to learn about volunteer opportunities

Annual Membership Dues:

Family \$12

Senior \$6

Business \$20

Multiple year discounts available



The Ahlvers Group
Jerry & Hedy Ahlvers
402-677-3020

"Working Together For You"

Email: jha@realtor.com
 Web: Jerryhedyahlvers.cbshome.com



"Our Other Midtown Listings"

5631 Emile - Brick Tudor- \$235,000
 1724 N. 54th St - Stone R Ranch - \$155,000
 Beebe Runyan Condo - \$220,000
 Beebe Runyan Condo-\$375,000

Coming Soon

Wonderful 4 Bedroom Dundee 2 1/2 Story

"Let the Experience of the Ahlvers Group
 help you with any of your Real Estate
 Questions & needs in 2008"

671 N. 57th Avenue
\$625,000

**New Listing in
 Memorial Park**



LOCATION ... LOCATION ...LOCATION ...

Wonderful 2 1/2 story Brick Home with
 Great Street Appeal. Features include:
 Center Hall Plan, Wood Floors, 6
 Bedrooms, 4 Bath Locations, 2 Year Old
 Kitchen with Granite and 2 Car Garage.
 Enjoy your Main Floor Family Room and
 Breakfast Nook with a Backyard view.

Call or Email Jerry or Hedy
 to Schedule a Private showing



4501 Leavenworth Street
 Omaha, NE 68106

Chris Oldenhuis

Owner

Phone 402.573.8125 Fax 402.934.5637 Mobile 402.669.1669
 Email info@oldenhuiscontracting.com www.oldenhuiscontracting.com



The UPS StoreSM

Beverly Hills Plaza
7914 W. Dodge Rd. 397-0100
Your Pack and Ship Experts

Plus : Packing & Moving Supplies,
 Mailbox, Fax and Freight Service

Jack Kubat, Owner since 1991. Dundee resident.

To avoid delay... Please send all membership renewals to address on membership form, on the other side of this page. **Please. DO NOT** send membership forms to P. O. Box

Shurson Publishing
 P.O. Box 31485
 Omaha, NE 68131

PRST STD
 US POSTAGE
 PAID
 Omaha, NE
 Permit 1638